



## Manor View, London, N3 2SR

Guide Price £1,050,000 - Freehold

\* Chain Free \*

A 6 bedroom period terraced house situated in Finchley Central and in need of modernisation offering over 2000 square foot of accommodation.

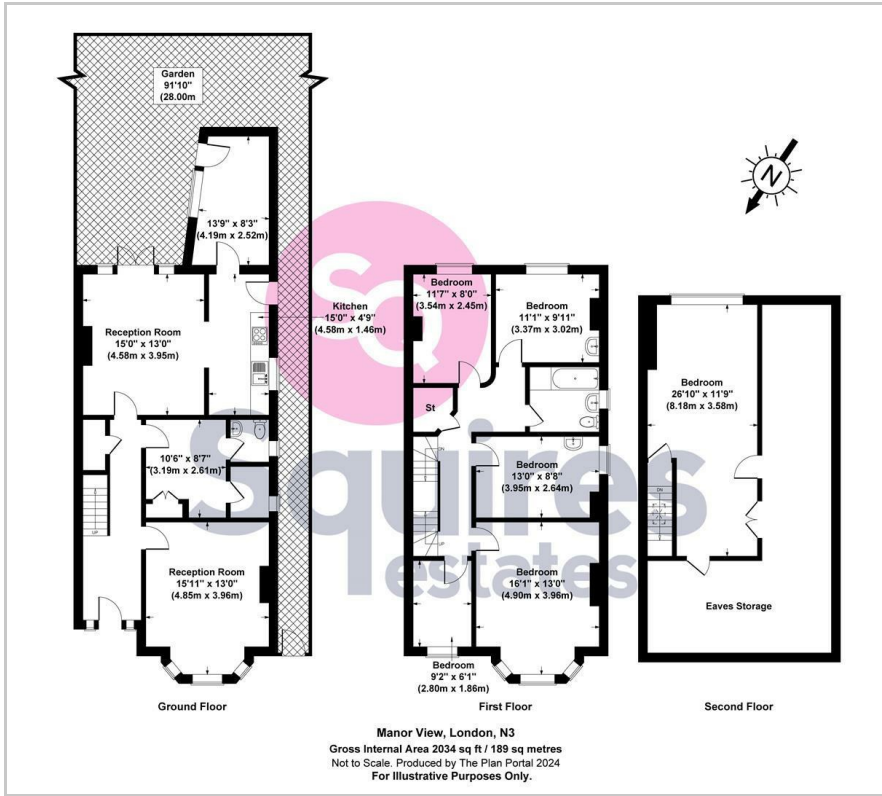
The accommodation comprises of 2 reception rooms, separate kitchen, which in turn leads into a separate utility room and a good sized rear garden. The first floor comprises of 5 bedrooms and a family bathroom. The top floor offers one further bedroom and ample storage space, some of which could easily be utilised within the room. Off street parking for one car.

The property is well located for Finchley Central and multiple schools and would be ideal for anyone looking to put their own stamp on this character home. Further benefits include no onward chain and potential to extend (subject to the necessary consents).

Barnet Council Tax Band: F

- Chain free
- Over 2000 square foot
- 6 Bedrooms
- Off street parking
- Over 90' garden
- 2 Reception rooms
- Council tax band F
- Close to Finchley Central

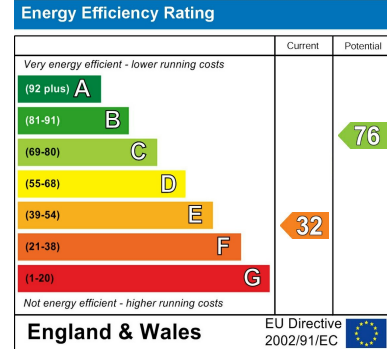
# Floor Plan



# Area Map



# Energy Efficiency Graph



These particulars, whilst believed to be accurate are set out as a general outline only for guidance and do not constitute any part of an offer or contract. Intending purchasers should not rely on them as statements of representation of fact, but must satisfy themselves by inspection or otherwise as to their accuracy. No person in this firm's employment has the authority to make or give any representation or warranty in respect of the property.

## Finchley Branch

181a Squires Lane,  
 Finchley,  
 London N3 2QS  
 Tel 020 8343 2111

## Hendon Branch

16 Central Circus Parade,  
 Queens Road, Hendon,  
 London NW4 3AS  
 Tel 020 8202 0808

## Mill Hill Branch

7 Thornfield Parade,  
 Holders Hill Road, Mill Hill,  
 London NW7 1LN  
 Tel 020 8349 3030

